

stream24 Webcasting KG

Heckenweg 30a
91056 Erlangen
Germany

☎ Phone +49 9131 - 920 18 60
☎ Fax +49 9131 - 920 18 67
✉ Email info@stream24.com
🌐 Website www.stream24.com

Software datasheet #SAMCAST-IC
(for Windows 7, Vista and XP)



Feeding radio livestream with
SAM Cast / Simple Cast (from version 3.x) to
Icecast server

Rev.	Author	Release	Comments/changes
1.0	A. Bardonski 12.03.2013	K. Werner 15.03.2013	SAM Cast v3.4.0 on Windows 7 Home Premium (64 bit)

Introduction

SAM Cast - also known under its previous name 'SimpleCast' - uses encoder software from Spacial Audio Solutions.

SAM Cast reads in real time from the line-in input of the soundcard, in which the audio signal is supplied from the master output of the mixer or the radio automation system.

The application supports Shoutcast, Shoutcast 2, Icecast and Windows Media Server. There are also many encoders that enable a live radio stream in mainstream audio formats: MP3, aacPlus (HE-AAC) and WMA.

Below we show you how you can convert, using SAM Cast, the audio signal feed to the PC into a live stream format and broadcast to the streaming server.

1. Software download and installation

Follow this link:

<http://spacial.com/sam-cast?ref=A392&show-download=true>

Please download the software and install it, then you can proceed to the next step and page.

2. Configure SAM Cast

Step 1: Start SAM Cast and you will get the following launch window:

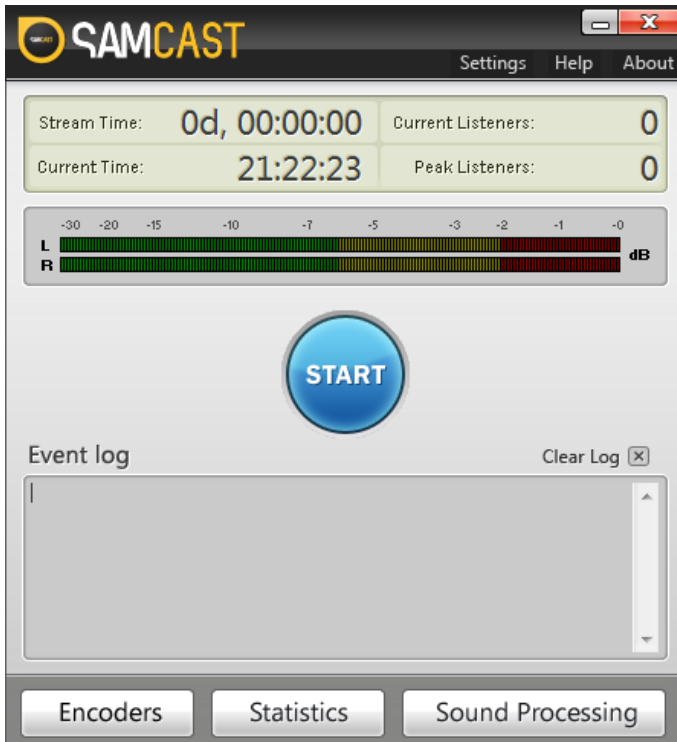


Fig.1: SAM Cast start screen

Step 2: Add Encoder and set up

SAM Cast is made from individual modules. Clicking on [Encoders] opens another module window:

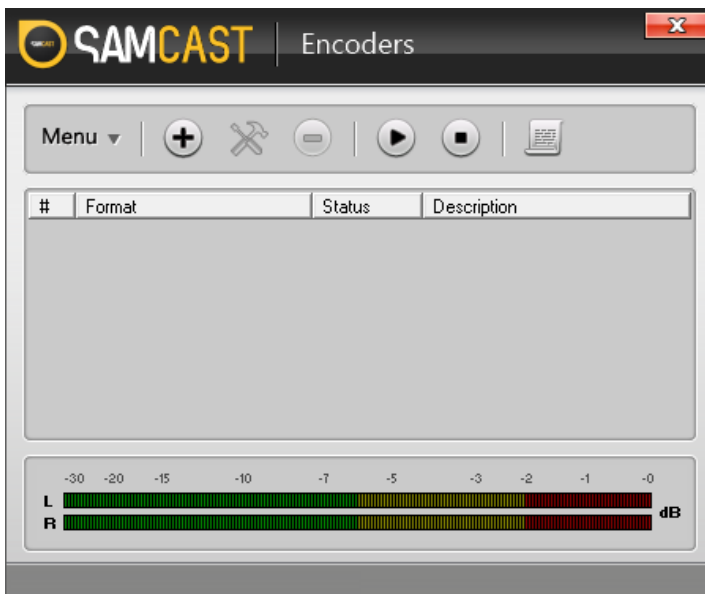


Fig. 2: SAM Cast encoders

The appropriate encoder for the live stream is added here and configured.

Click on [+]

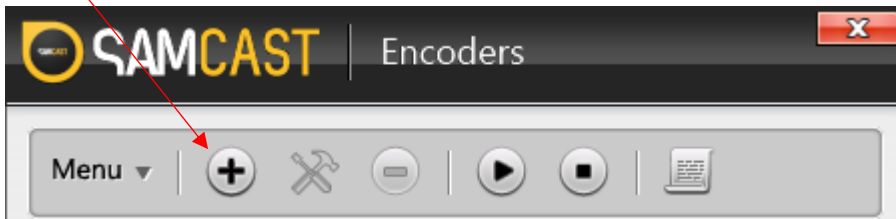


Fig. 3. Encoder module

and select the **MP3 (LAME_ENC)** plugin:

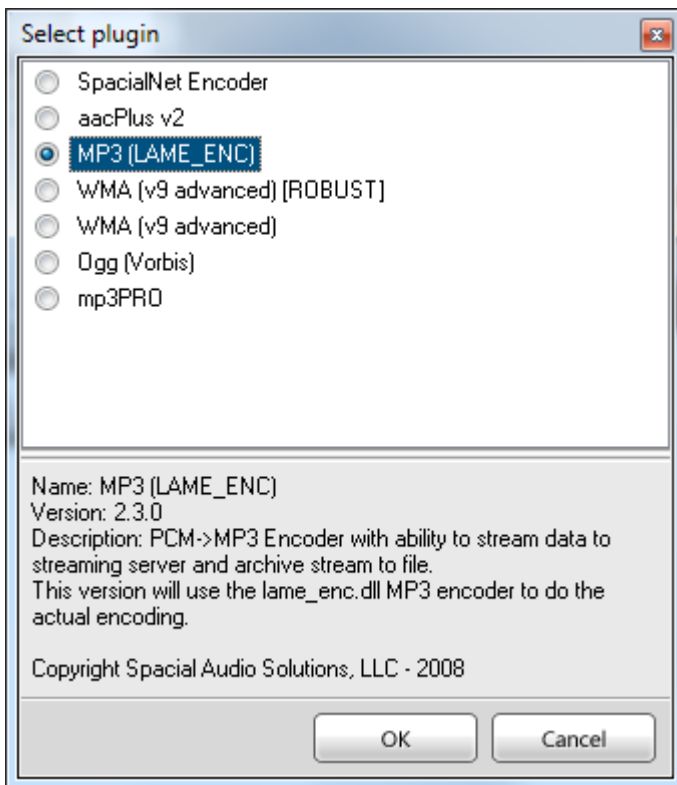


Fig. 4: Encoder plugin selection

Continue with [OK]

Step 4: Configure MP3 encoder

Heading: Converter

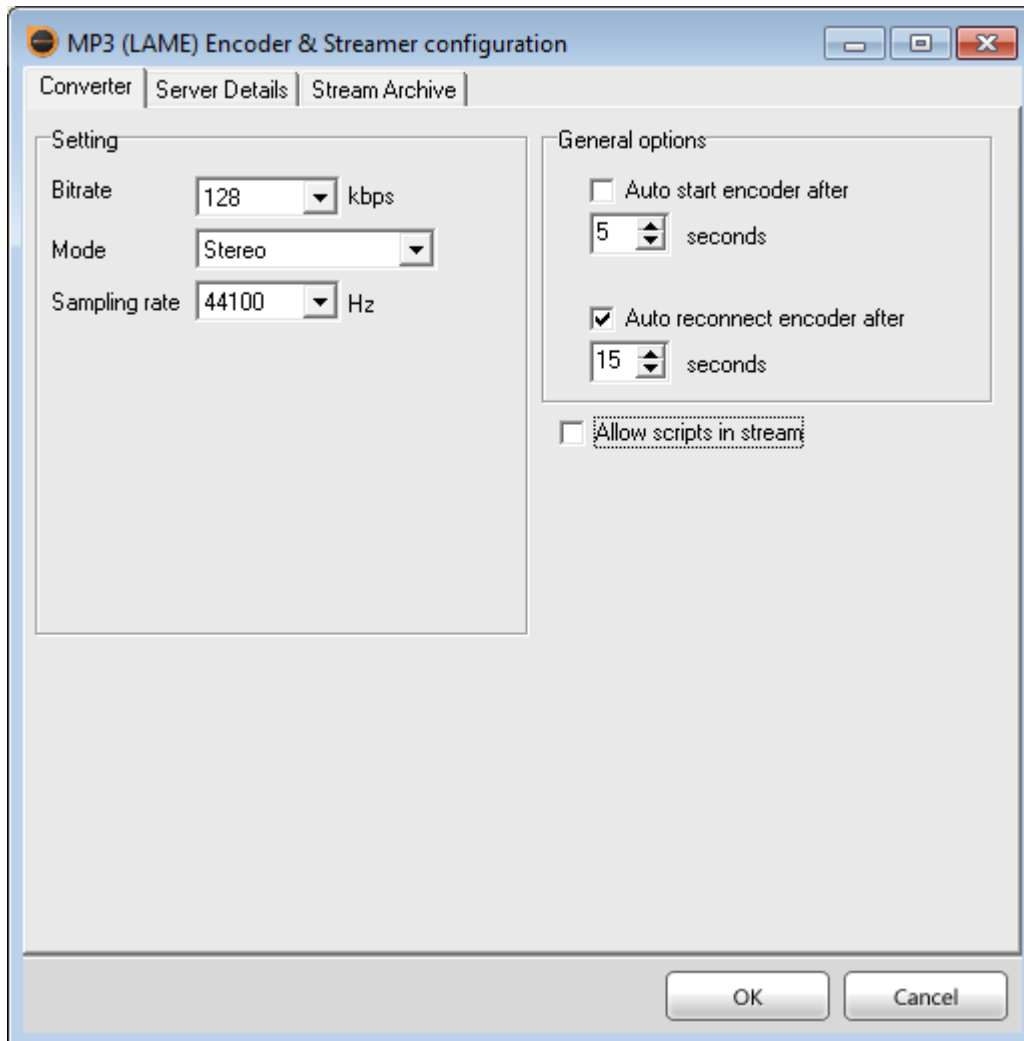


Fig. 5: MP3 LAME encoder - converter

Please accept the recommended basic settings in the image above and go to the tab 'Server Details.'

Heading: Server details

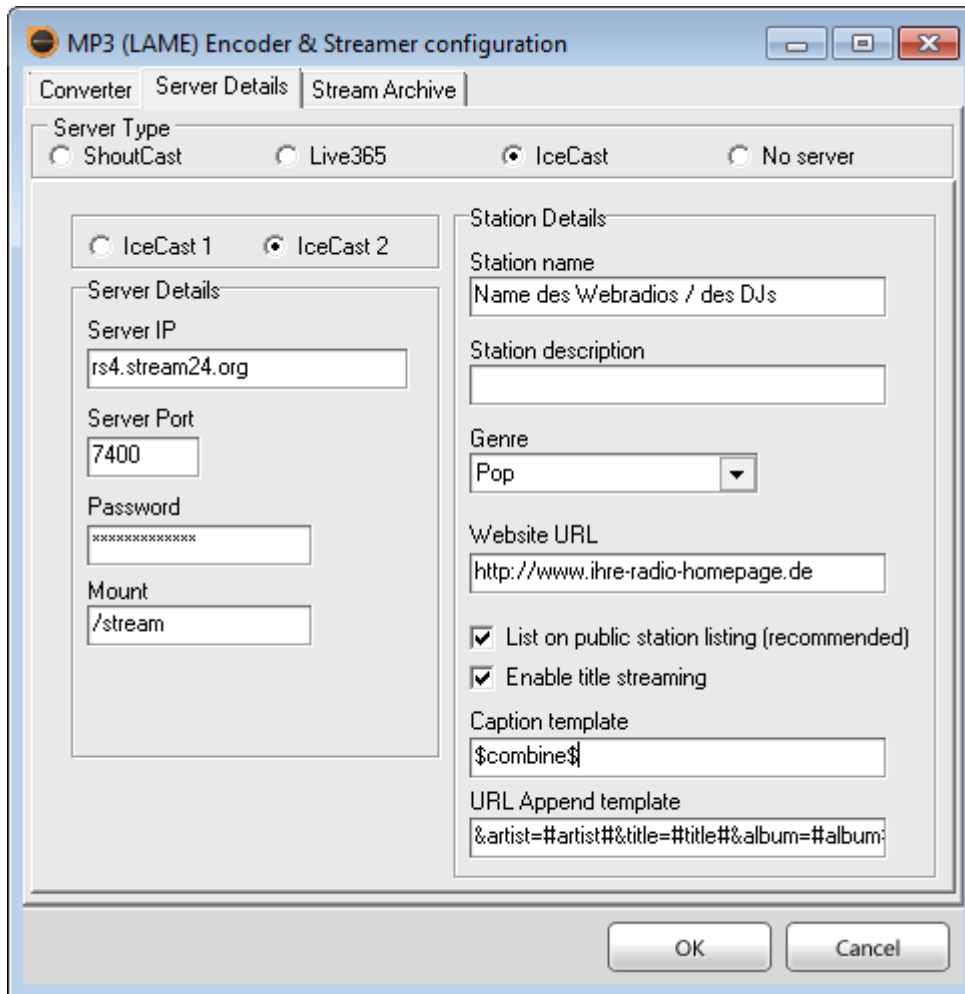


Fig. 6: MP3 LAME encoder - server details

- Select IceCast and IceCast 2 as the **server type** and enter the **server IP**, **server port**, **password** and **mount** according to your individual server data.

Important! You can find your personal server data by logging into the customer area under 'Server Administration | Server Configuration' where you can set the stream password yourself and change it at any time.

- **Station name:** name of your radio station.
- **Station description:** this field can be left blank.
- **Genre:** here you can specify the type of music on your radio station.
- **Website URL:** the Internet address of your homepage; please do not forget to put **http://** at the beginning of the URL.

Clicking [OK] accepts the settings and closes the configuration window.

The MP3 encoder is now embedded, you should get the following picture:

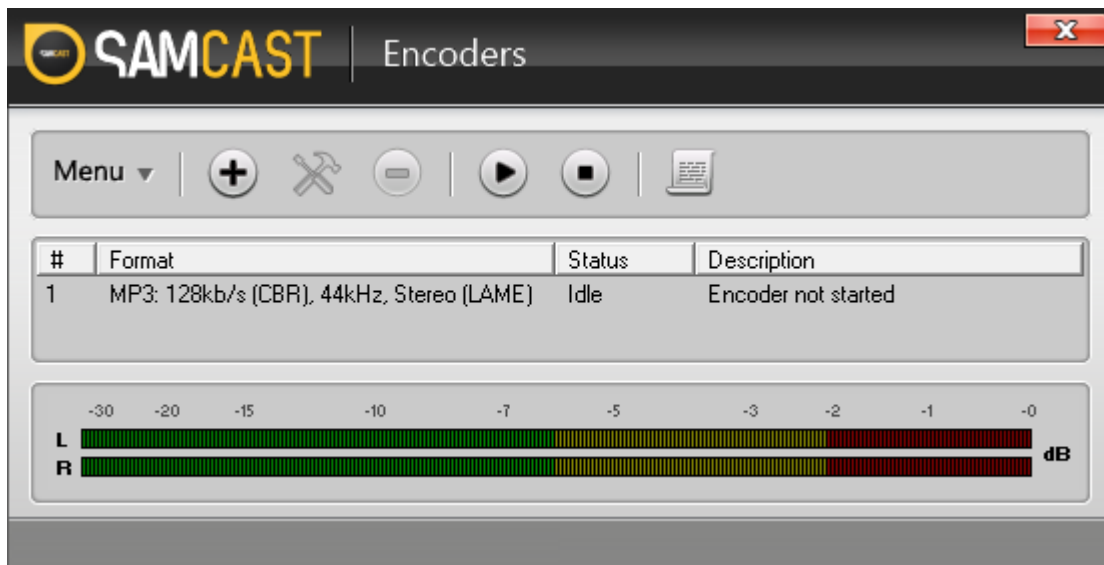


Fig. 7: Encoder module with installed MP3 encoder

3. Select capture device / sound card

Go back to SAM Cast main module and click on 'Settings':

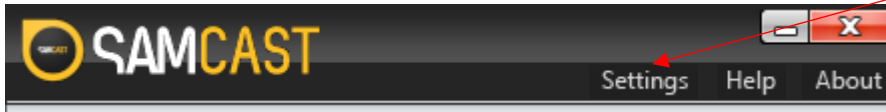


Fig. 8: SAM Cast main module (upper section)

and you get the following window:

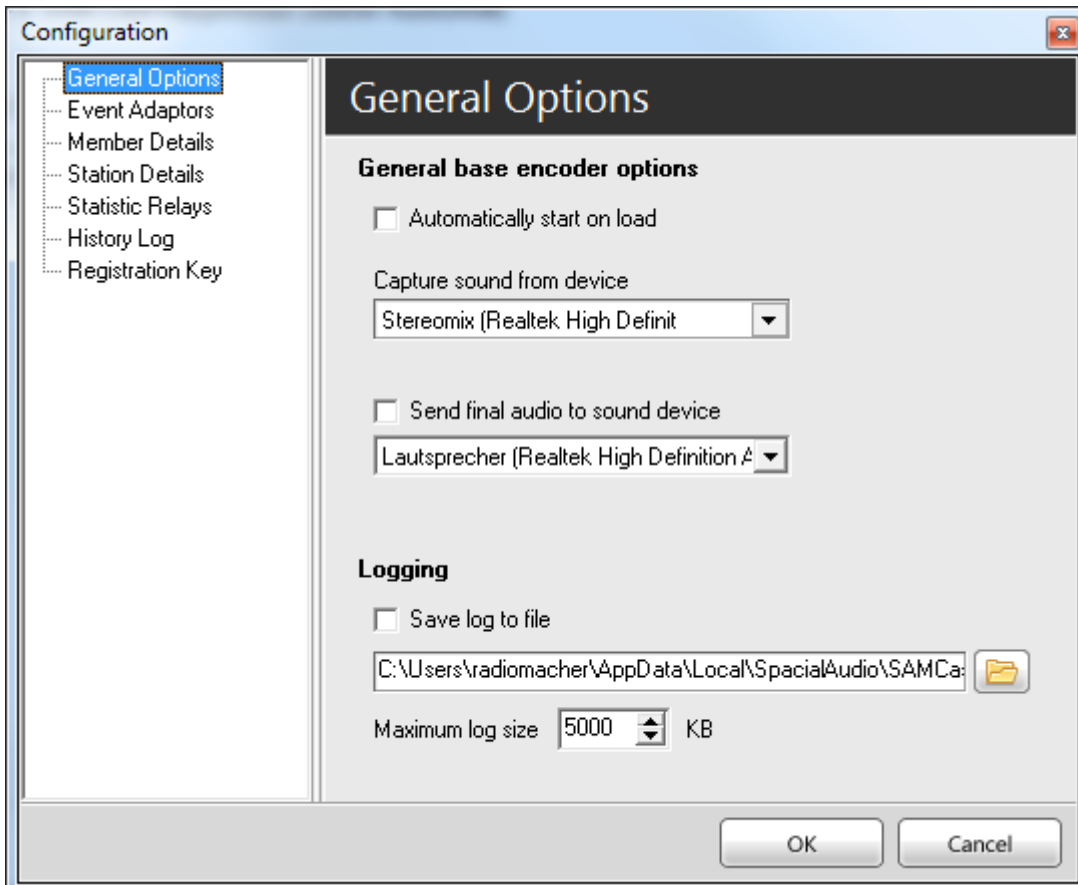


Fig. 9: SAM Cast general options

In the first tab, **General Options**, under the setting 'Capture sound from device,' select the device (sound card) from where the audio signal should be picked up for your stream.

The other settings in this window are optional.

Exit the setting with [OK].

4. Start SAM Cast and encoder and start transmission

Run the audio signal to the line-in input of your sound card and start SAM Cast by clicking [Start].

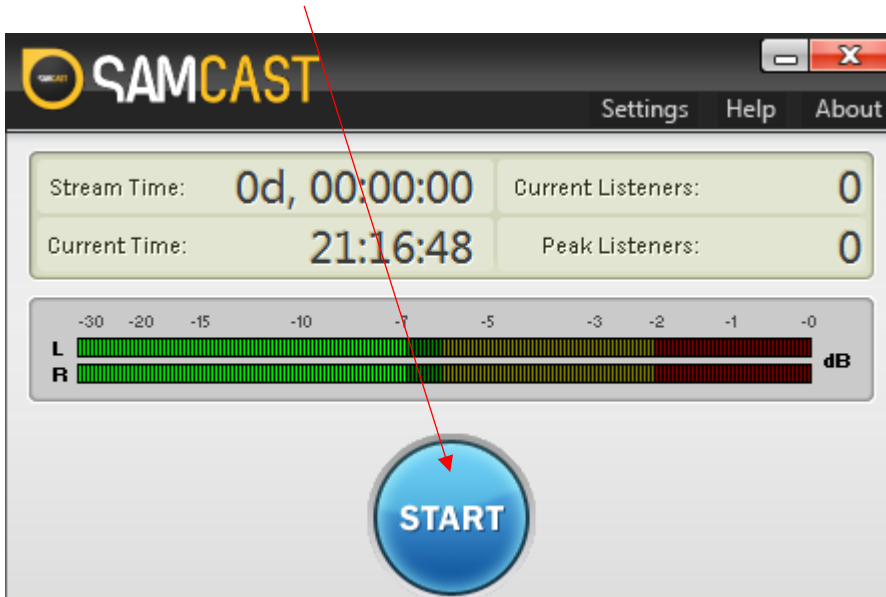


Fig. 10: Start SAM Cast

Now click the play button in the encoder window to also start the encoder:

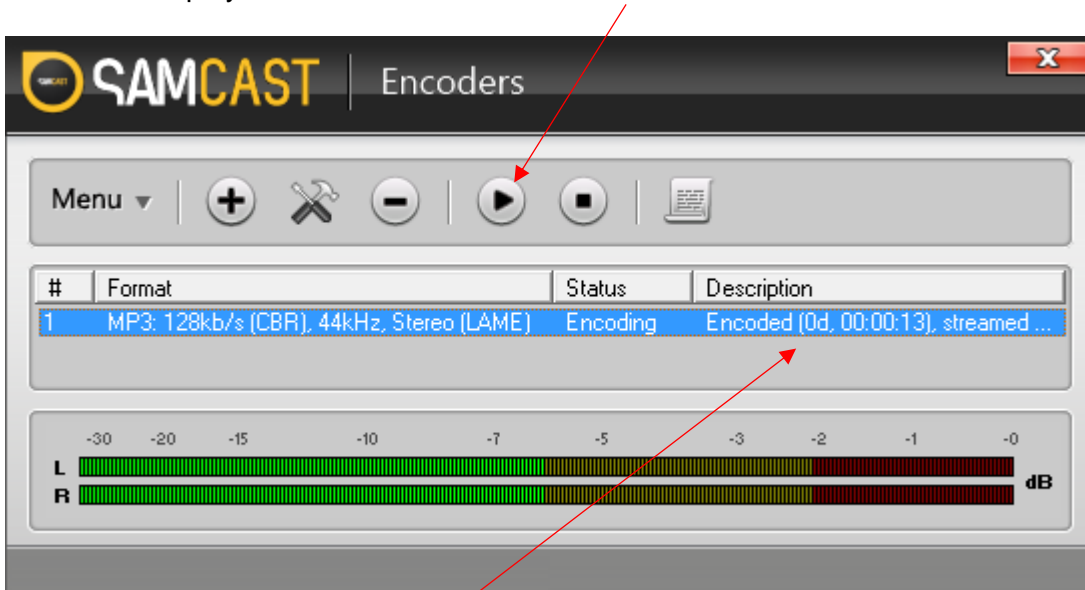


Fig. 11: MP3 encoder in operation

If the connection to the server was successful, you will see how the encoder in the column 'Description' begins counting the broadcasting time and the amount of data transmitted.

Congratulations - you're broadcasting!

5. Error messages / FAQ / Tips

- Encoder error message: Invalid server password
You receive the error message 'Invalid server password' if you made a mistake when entering the password. (Page 6)
- Encoder error message: Disconnected 10061
The error code 10061 indicates that the stream server is unreachable. Most common cause: The server is not (yet) turned on. → Check the customer area; the LED status must be green, not black.